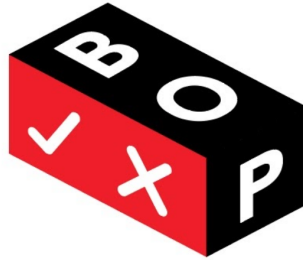


Brown Opinion Project: December 2021 Poll Results



Methodology

The Brown Opinion Project (BOP) conducted its December 2021 poll from December 2–3. To ensure a representative sample, BOP solicited responses from Brown undergraduate students as they exited Covid-19 testing locations at Alumnae Hall and Andrews House. Because all undergraduates were required to be tested on day one and day five after returning from Thanksgiving break, we believe this was the most effective way of generating a representative sample. BOP representatives spent 14 hours soliciting responses at Alumnae Hall and 10 hours at Andrews House. BOP representatives asked every person who exited the testing location if they were interested in taking a quick anonymous poll. Responses were anonymously collected using Google Forms. Over the course of the polling process, we collected 488 total responses from Brown undergraduate students. The margin of error is 4.44% with 95% confidence.

Self-reported Demographic Information

The sample of undergraduate students who took the poll is demographically similar to the Brown undergraduate student population. First-years made up 27.05% of the sample, sophomores 25.61%, juniors 23.77%, and seniors 22.95%, while 0.61% preferred not to indicate their class year.¹ The sample was 54.10% female, 42.42% male, 2.05% non-binary, while 1.43% preferred not to indicate their gender. Additionally, 60.25% of respondents identified as white, 27.87% as Asian, 13.52% as Black, 6.76% as non-white Hispanic, 0.41% as Native Hawaiian/Pacific Islander, 1.43% as American Indian/Alaska Native, while 2.46% of respondents preferred not to indicate their race. The percentages for race add up to more than 100 percent because some respondents selected more than one race/ethnicity. Students also indicated their (intended)

¹ “First-years” includes the class of 2025; “sophomores” includes the classes of 2024 and 2024.5; “juniors” includes the classes of 2023 and 2023.5; “seniors” includes the classes of 2021.5, 2022, and 2022.5.

field of study: 51.02% of respondents selected STEM, 22.95% selected Humanities, 20.70% selected Social Sciences, 2.66% selected Arts, and 2.66% preferred not to answer.

Results

1) How responsive do you think the Brown administration is to student movements in general?

Very unresponsive: 12.70%
Somewhat unresponsive: 32.58%
Neither responsive nor unresponsive: 12.70%
Somewhat responsive: 31.35%
Very responsive: 2.25%
Unsure: 7.79%
Prefer not to answer: 0.61%

2) Which of the following statements best describes your experience with online and in-person classes at Brown?

Online classes are much less difficult than in-person classes: 12.91%
Online classes are somewhat less difficult than in-person classes: 41.39%
Online classes are about as difficult as in-person classes: 13.32%
Online classes are somewhat more difficult than in-person classes: 13.73%
Online classes are much more difficult than in-person classes: 6.35%
Unsure: 10.04%
Prefer not to answer: 2.25%

3) When you watch a recorded lecture, what speed do you watch it on?

.50X: 0.00%
.75X: 0.20%
1X: 15.57%
1.25X: 22.33%
1.50X: 29.30%
1.75X: 11.27%
2X: 17.42%
Unsure: 2.45%
Prefer not to answer: 1.43%

4) What aspects of online learning do you want in your own classes as we transition back to fully in-person learning? (select all that apply)

Asynchronous classes: 21.52%
Recorded lectures: 85.25%
Take-home exams: 72.95%
Online office hours: 46.93%
Zoom sections: 23.77%
Unsure: 2.05%
Prefer not to answer: 1.23%

5) Overall, how would you rate your mental health?

Very good: 9.22%
Good: 36.48%
Okay: 32.79%
Poor: 16.80%
Very poor: 3.48%
Unsure: 0.00%
Prefer not to answer: 1.23%

6) This semester, do you feel that your professors have taken your mental health into account?

Yes: 52.87%
No: 22.13%
Unsure: 24.18%
Prefer not to answer: 0.82%

7) What is the capital of Canada?

Correct response (“Ottawa”): 23.97%²
Incorrect response: 76.02%

8) Have you purposely stolen from Brown dining halls/cafes?

Yes, many times: 18.03%
Yes, a few times: 26.43%
Yes, once: 7.38%
Never: 40.37%
Unsure: 5.12%
Prefer not to answer: 2.66%

² 35 responses (7.12% of the overall sample) were spelled incorrectly as “Ottowa.” These responses were counted as correct in our categorization of responses.

9) Should Brown mandate Covid-19 booster shots for undergraduates?

Yes: 76.02%

No: 11.89%

Unsure: 11.48%

Prefer not to answer: 0.61%

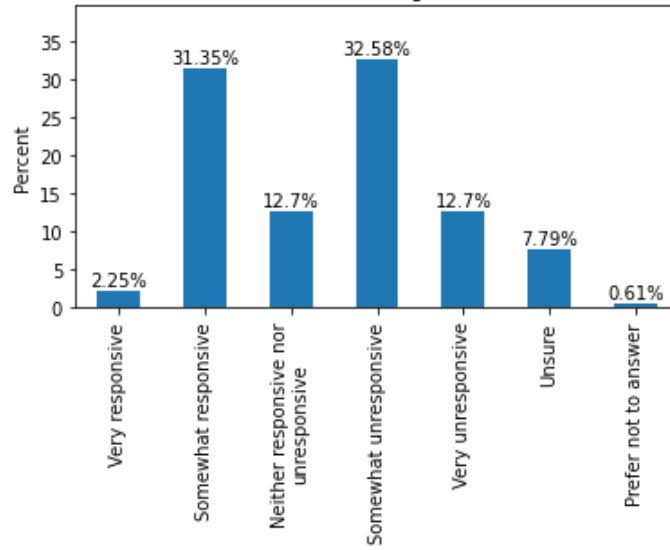
Raw anonymized data is available here: [+](#) Poll 02 Intake Form (Responses)

If you have questions about our results or methodology please reach out to brownopinionproject@brown.edu. Thanks for reading!

Data Visualizations

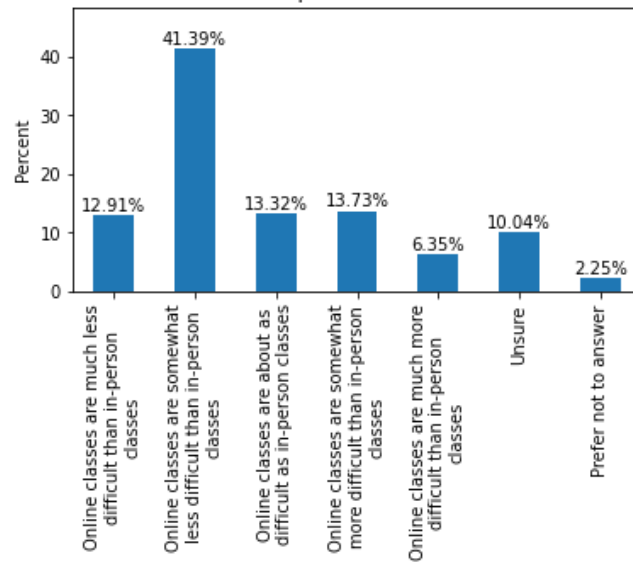
1.

How responsive do you think the Brown administration is to student movements in general?



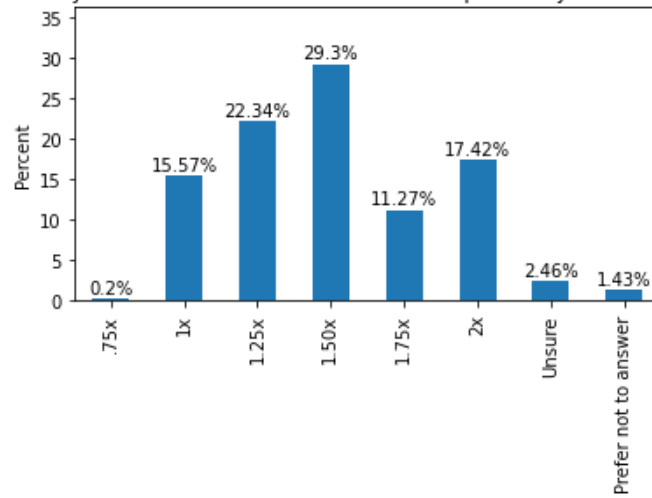
2.

Which of the following statements best describes your experience with online and in-person classes at Brown?



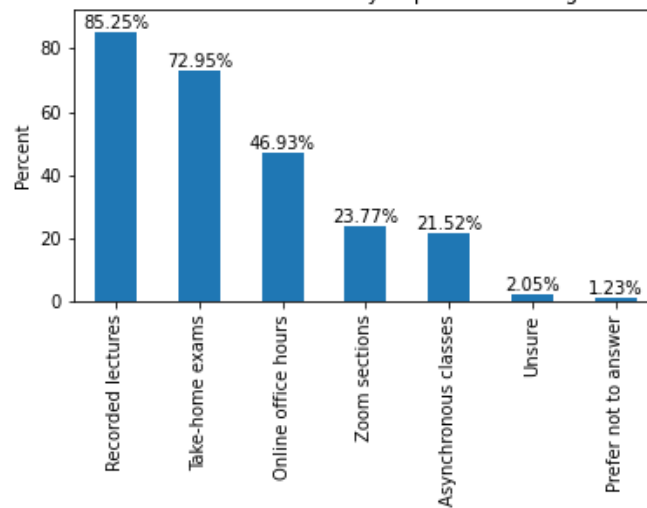
3.

When you watch a recorded lecture, what speed do you watch it on?



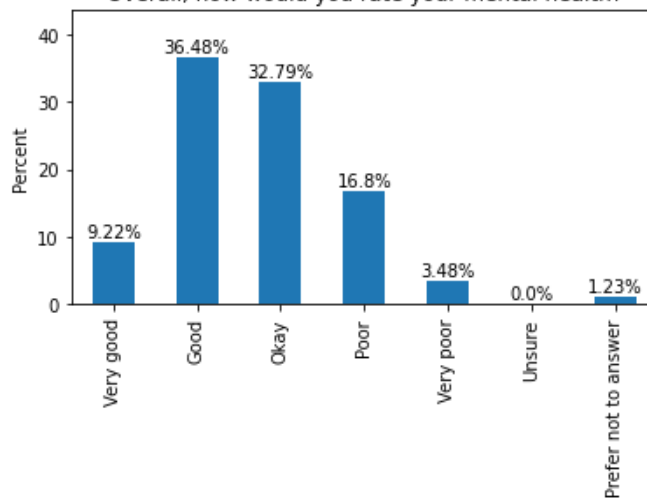
4.

What aspects of online learning do you want in your own classes as we transition back to fully in-person learning?



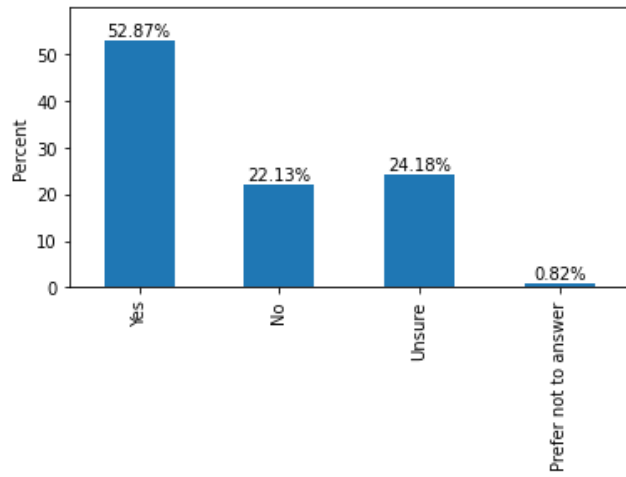
5.

Overall, how would you rate your mental health?



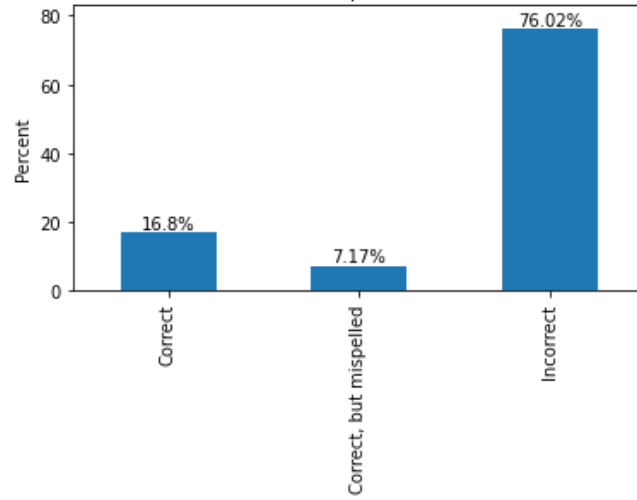
6.

This semester, do you feel that your professors have taken your mental health into account?



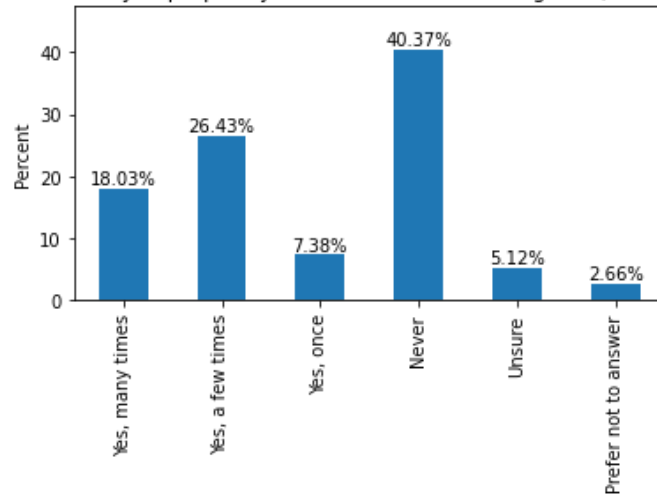
7.

What is the capital of Canada?



8.

Have you purposely stolen from Brown dining halls/cafes?



9.

Should Brown mandate Covid-19 booster shots for undergraduates?

